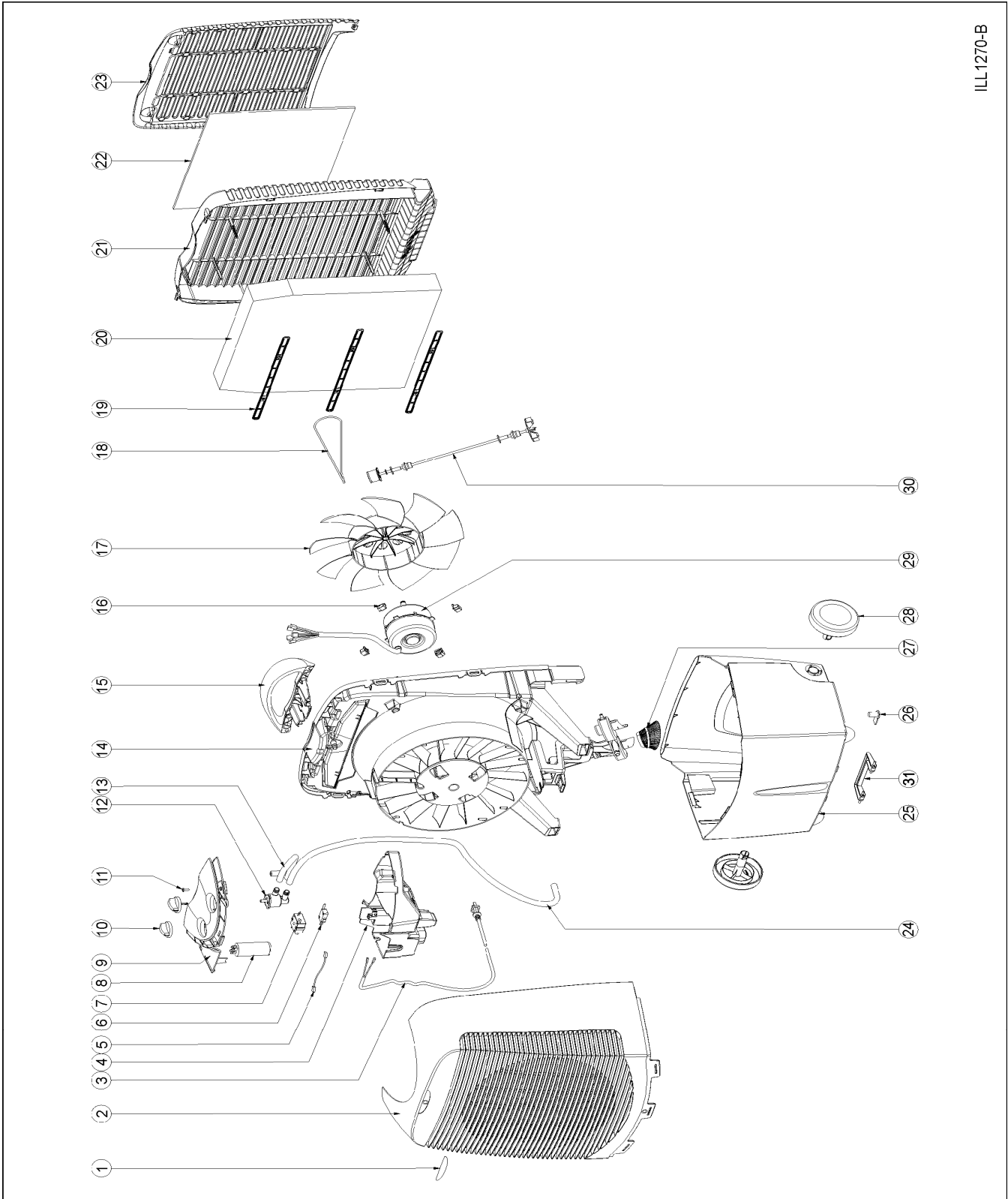


ILL1270-B



ITEM NO.	PART NO.	PART NAME	DESCRIPTION/ COMMENTS	MAGICOOL BONE	MAGICOOL COMPACT BONE	MAGICOOL COMPACT GREY/BLACK	CLIMATE WIZARD BONE
1	827223	Name Badge	Convair colour - Mushroom	X	X		X
1.1	827230	Name Badge	Convair colour - Graphite			X	
2	371016	Front Panel & Badge Assembly	Colour - Bone	X	X		X
2.1	112190	Front Panel & Badge Assembly	Colour - Titanium Grey (in carton)			X	
3	852348	Plug & Cord Set UK	Colour - White	X	X		X
3.1	858623	Plug & Cord Set UK	Colour - Black			X	
4	370897	Control Enclosure	Convair colour - Mushroom	X	X	X	X
5	821979	Switch to Microswitch Wire	Used before March 2006	X	X		X
5.1	823584	Switch to Microswitch Wire	Used after March 2006	X	X	X	X
6	856094	Microswitch - Rear Panel		X	X	X	X
7	857855	Switch - Rotary 4 Position		X	X	X	X
8	800097	Capacitor 3.2 uf		X	X	X	X
9	384443	Control Panel	Climate Wizard				X
9.1	384436	Control Panel	Magicool - Colour Mushroom	X	X		
9.2	384832	Control Panel	Magicool - Colour Black			X	
10	374734	Knob	Convair colour - Mushroom	X	X		X
10.1	384535	Knob	Colour - Black			X	
10.2	110967	Knob & Shaft Assy - Fan Switch	Convair colour - Mushroom	X	X		X
10.3	112121	Knob & Shaft Assy - Fan Switch	Colour - Black			X	
11	805597	Screw		X	X	X	X
12	108162	Water Valve Assembly		X	X	X	X
13	857619	Hose (to spreader)		X	X	X	X
14	370873	Chassis & Hose Assembly	Colour - Blue		X		X
14.1	384672	Chassis & Hose Assembly	Colour - Black	X		X	
15	383033	Handle	Convair colour - Mushroom	X	N/A	N/A	X
16	843476	Motor Rubber - Round Motor	Colour - Black	X	X	X	X
16.1	843483	Motor Rubber - Square Motor	Colour - White (current)	X	X	X	X
17	370743	Fan	Colour - Blue (obsolete - use 384573)	N/A	N/A	N/A	N/A
17	384573	Fan	Colour - Black only	X	X	X	X
18	806921	Belt - suits Black Pulley			X	X	X
18.1	806938	Belt - suits White Pulley		X			
18.2	902906	Belt Kit - suits Black Pulley	Before September 2004		X	X	X
19	401911	Pad Retainer - For Aspen Pad	3 per Cooler		X	X	X
19.1	401997	Pad Retainer - For Chilcell Pad	2 per Cooler	X			
20	107936	Cooling Pad - Aspen / Woodwool			X	X	X
20.1	110653	Cooling Pad - Chilcell NGP	402.5 * 333 * 50mm	X			

WHEN ORDERING REPLACEMENT PARTS PLEASE QUOTE PART NUMBERS AND DESCRIPTION.

ITEM NO.	PART NO.	PART NAME	DESCRIPTION/ COMMENTS	MAGICOOL BONE	MAGICOOL COMPACT BONE	MAGICOOL COMPACT GREY/BLACK	CLIMATE WIZARD BONE
21	370750	Rear Panel	For Woodwool / Aspen - Colour Bone	X	X		X
21.1	384641	Rear Panel	For Woodwool / Aspen - Colour Black			X	
22	834177	Dust Filter 3M					X
23	370774	Dust Filter Cartridge/Holder	Colour - Bone				X
24	850566	Hose (to pump)		X	X	X	X
25	109145	Tank (Includes Flipout Foot, Wheels & Plug)	Colour - Bone	X			
25.1	108186	Tank (Includes Wheels & Plug)	Colour - Bone		X		X
25.2	112183	Tank (Includes Wheels & Plug)	Colour - Titanium Grey (in carton)			X	
26	320700	Drain Plug	Colour - Black only (Change in progress from 320724 Blue)	X	X	X	X
27	372112	Strainer	For pump	X	X	X	X
28	320502	Wheel	Convair Colour - Mushroom (2 per Cooler)	X	X		X
28.1	384542	Wheel	Colour - Black (2 per Cooler)			X	
29	091396	Motor Kit 230V / 50HZ - 6 lead (Includes 4 Motor Rubbers)	Replaces 091242 / 091228 / 091181	X	X	X	X
30	109237	Pump Shaft Assembly	After September 2004 (Black pulley)	X	X	X	X
30.1	110455	Pump Shaft Assembly	Before September 2004 (White pulley)	X			
31	383026	Flipout foot for tank	Magicool only	X			
	906782	Instruction Pack - Magicool UK			X	X	
	857879	DVD Convair PEAC - 6 Language (PAL)	ENG/SPA/PORT/ITAL/FRE/GER	X	X	X	X

WHEN ORDERING REPLACEMENT PARTS PLEASE QUOTE PART NUMBERS AND DESCRIPTION.